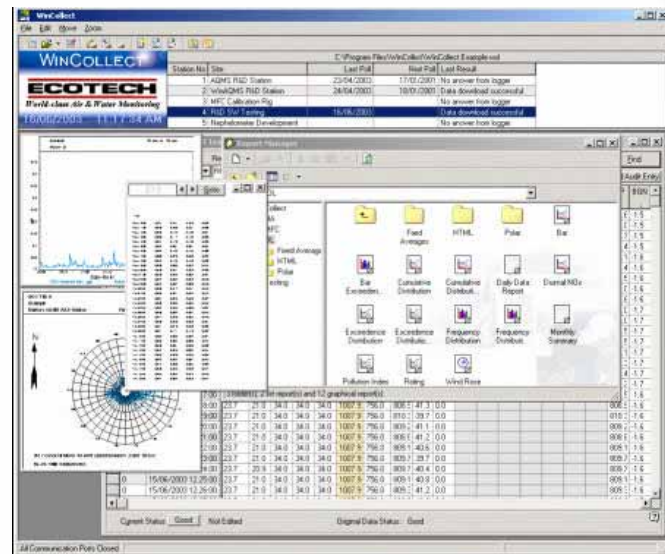


# WinCollect

## Data Evaluation & Reporting

Ecotech's WinCollect is a powerful tool for retrieving, collating and presenting data collected from a variety of environmental monitoring systems.

Supporting single or multi user installations WinCollect v4.0 provides the user with greater flexibility in :



## Licensing Options

### Lite

- Supports 1 Station only
- Supports WinAQMS, Datataker, EC9800, Serinus, Ecotech Aurora family, Microvol 1100 and HiVol 3000

### Standard

- Lite features + support for Ecotech agency analyzers – refer to table on back for details
- License charges to upgrade from 1 station to 2-4, 5-9, 10-20, 21+
- Additional License charge for other existing dataloggers
- Single user floating license also available as an option

### Multi User SQL

- Standard features + support for multiple users to access main SQL based database
- License charges to upgrade from 1 station to 2-4, 5-9, 10-20, 21+
- License charge for each additional seat to access the server
- Same additional license charging as Standard.

## Data Collection

- Easy configuration for a variety of data loggers
- Simple to set up and use



## Reporting and Validation

- Customer defined reports are generated via an easy to use wizard and data can be presented in list or graphical format.
- Customers are able to schedule data download and reports at user specified timeframes or in the event of a parameter exceedence. These reports can be then sent automatically to an email, website or remote computer.
- Downloaded data can be imported into a database for viewing, evaluation and validation. Manual changes can be made to this data with the reasons for changes written to an Audit Log.

## Technical Specifications

### Compatible Data Loggers

Manufacturer	WinCollect Version
Ecotech	Light, Standard and Multi User
DataTaker	Light, Standard and Multi User
Weather Master	Light, Standard and Multi User
Star Logger	Light, Standard and Multi User
Unidata	Light, Standard and Multi User
ODBC	Light, Standard and Multi User
Met One	Standard and Multi User
Opsis	Standard and Multi User
Opsis	Standard and Multi User
Thermo	Standard and Multi User (Purchased separately)
Turn Key Instruments	Standard and Multi User (Purchased separately)
ESC	Standard and Multi User (Purchased separately)
MinData	Standard and Multi User (Purchased separately)
Campbell Scientific	Standard and Multi User (Purchased separately)

### System requirements

Platform Support	System Requirements
Microsoft® Windows® XP Microsoft® Windows® 2000 Microsoft® Windows® Vista	Main Memory (RAM) >1 Gig Hard Disk >40Gig CPU >2 Gig Hertz Screen Resolution >1024 x 768

